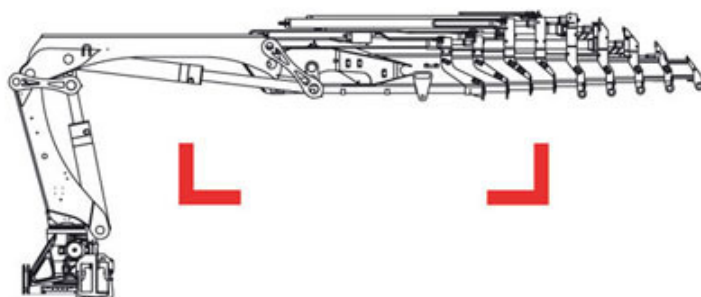
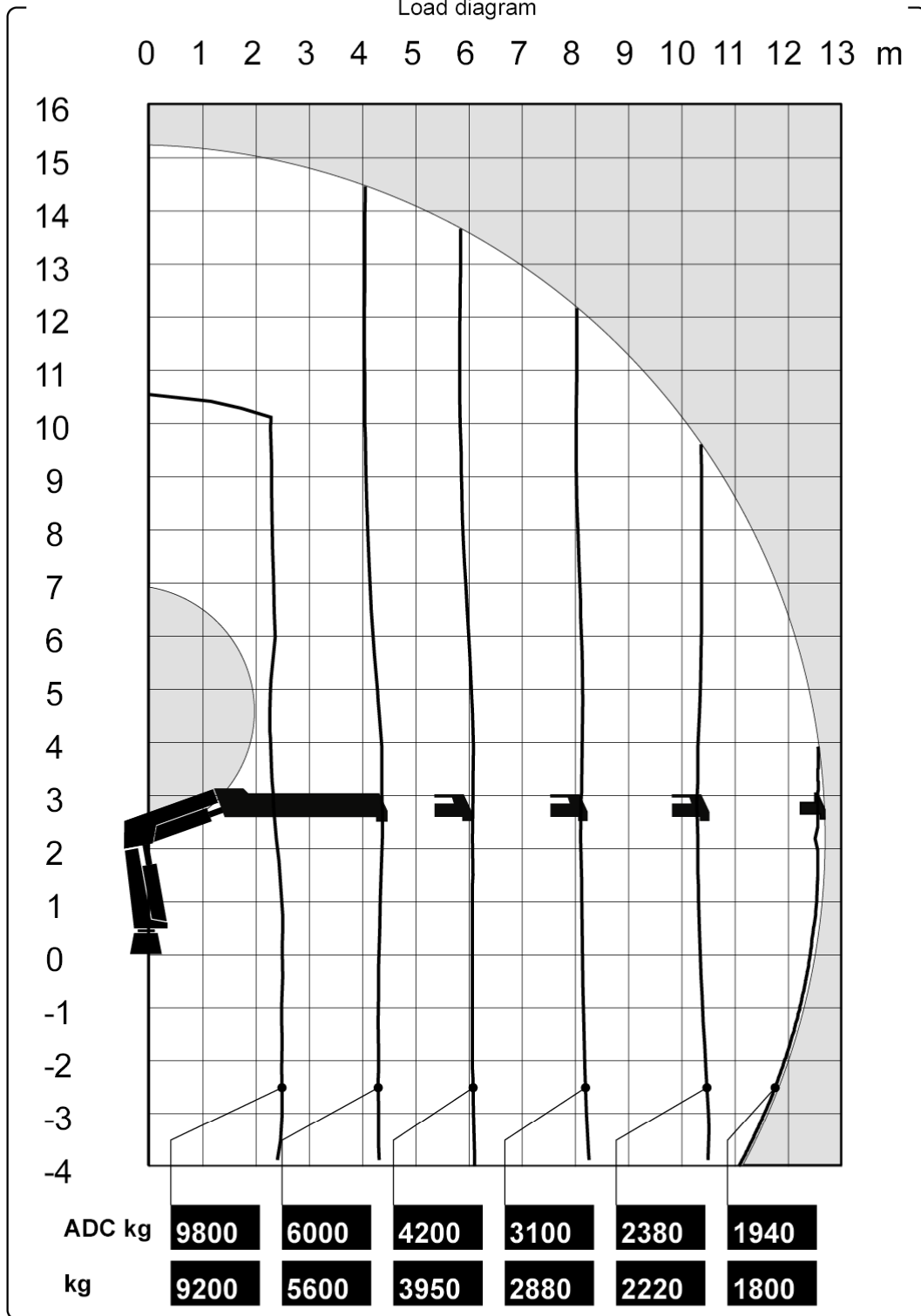


HIAB 288 EP-4 HiPro



Technical Data

Load diagram



The HIAB XS range



Version

HIAB 288 EP-4 HiPro

Lifting capacity	kNm	242
Lifting capacity	tm	24.7
Lifting capacity (ADC)	kNm	259
Lifting capacity (ADC)	tm	26.4
Outreach - lifting capacity, standard	m-kg	2.6 - 9,800 4.4 - 6,000 6.1 - 4,200 8.1 - 3,100 10.3 - 2,380 12.6 - 1,940
Outreach - lifting capacity, manual extensions	m-kg	15.0 - 1,540 17.2 - 1,280
Hydraulic outreach, standard	m	12.7
Hydraulic boom extension	m	8.3
Outreach, manual extensions	m	17.3
Lifting height above installation level, hydr/man	m	15.3 / 19.8
Rec. oil flow	l/min	90 - 120
Power needed at rec. oil flow V80	kW	-
Power needed at rec. oil flow V91	kW	-
Working pressure	Mpa	34.0
Oil in tank	l	0 - 200
Tank capacity	l	0 - 235
Slewing angle	°	190 - 420
Max slope viable at full capacity	°	5
Slewing torque, gross	kNm	34.0
Slewing speed 80	°/s	15
Slewing speed	°/s	15
Lifting speed at standard hydraulic outreach	m/s	1.6
Height in folded position	mm	2,335
Width in folded position	mm	2,495
Install space required. Rotation area not included	mm	1,242
Install space required with hose and pipe kit	mm	1,242
Weight		
Crane in standard version without support legs	kg	3,070
Top seat	kg	0
Frame attachments	kg	40 - 60
Support leg equipment	kg	381 - 487

Data sheet

HIAB 288 EP-4 HiPro